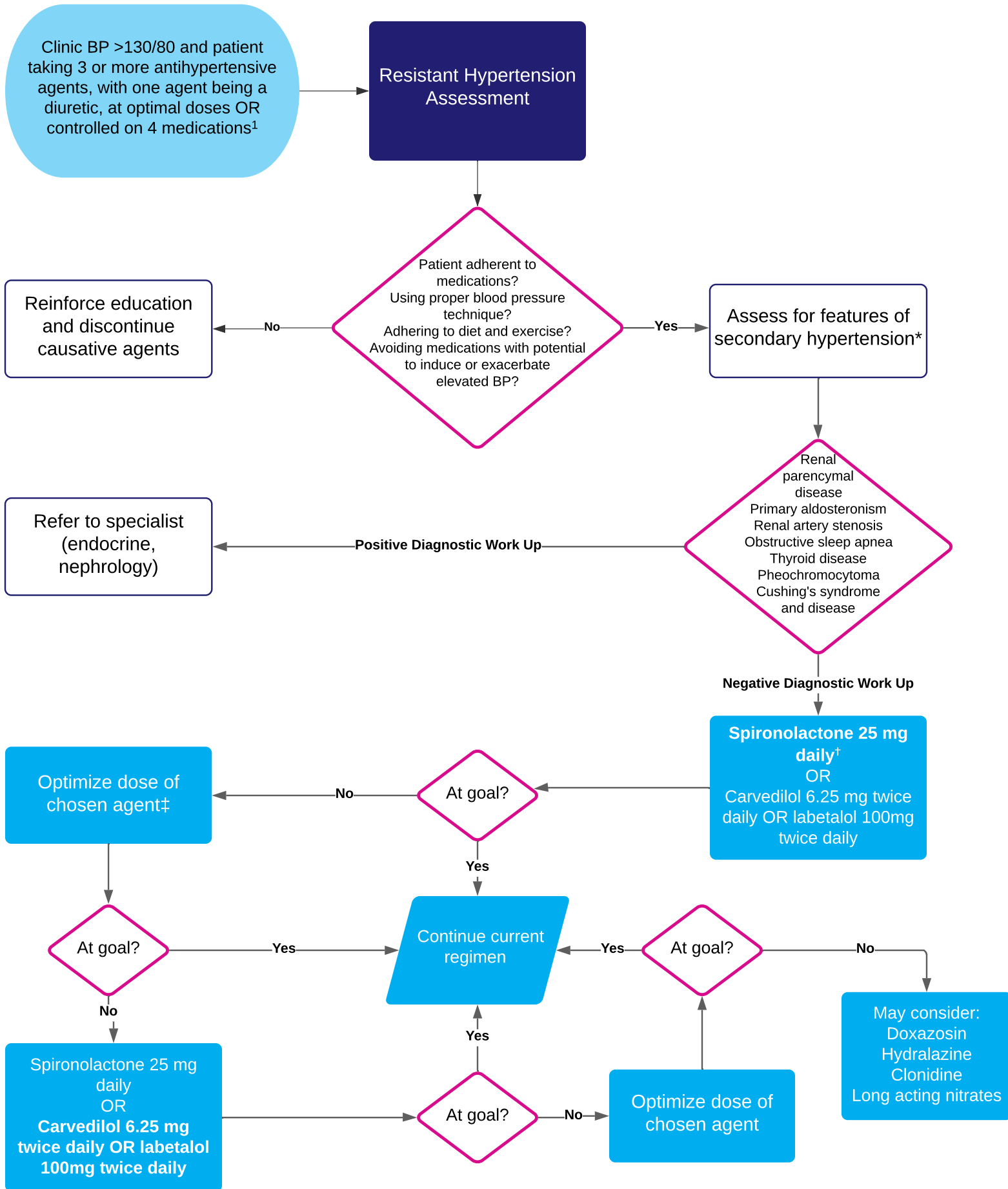


Suspected Resistant Hypertension Pathway



* See Appendix 1, Table 3: Features of Secondary Hypertension

† Spironolactone preferred over beta blocker if patient does not have hyperkalemia or severe renal impairment

‡ See Appendix 1, Table 1 for recommended dosing

References:

1. Carey RM, Calhoun DA, Bakris GL, et al. Resistant Hypertension: Detection, Evaluation, and Management: A Scientific Statement From the American Heart Association. *Hypertension*. 2018;72(5):e53-e90. doi:10.1161/HYP.0000000000000084