

When prescribing a specialty medication, follow these steps to:

Engage Your Liaison

1 New Prescriptions

- Follow your normal workflow and order a specialty medication in Epic
- Let your patient know to expect a phone call from their pharmacy liaison regarding their medication

2 Existing Prescription Questions

- Bring all specialty medication requests coming from incoming patient calls or outside pharmacies to your liaison's attention by routing a message to the liaison pool in Epic.
- Contact your pharmacy liaisons using the following Epic pool:
- **MSD East 102nd Multispecialty Specialty Pharmacy Liaisons** or using the following Outlook email pool:

#SPLiaisonsIMAMultispecialty

SPLiaisonsIMAMultispecialty@mountsinai.org

Follow the Prescription Life-cycle

Your Pharmacy Liaisons Will:

1 Receive and Initiate

- Receive the specialty medication request via the Epic pool
- Initiate benefit investigation – making clear documentation via telephone encounter

2 Update & Communicate

- Update the telephone encounter for every step (prior authorization status/results, financial assistance status, and delivery dates)
- Communicate any potential delays/roadblocks directly to you and your care team

3 Monitor the MSOT Inbasket

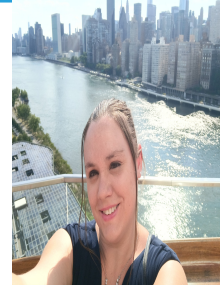
- Release refills to the pharmacy within 24 hours
- New starts will be released to the pharmacy after prior authorization and financial assistance are secured (when applicable)

4 Contact the Patient

- Liaisons proactively identify patients who can fill at Mount Sinai Specialty Pharmacy
- Patients will receive a phone call to discuss the new specialty pharmacy service and are given the choice to fill at Mount Sinai



Michele Korn



Miranda Bethel



Tia Levere

Phone: 646-396-3290

Fax: 646-439-9836

Email: spliaisonsimamultispecialty@mountsinai.org

Specialty Medications Supported by Your Liaison

** There may be other medications not listed below that are considered specialty medications. If you have any questions about a medication, please contact or send an Epic request to your pharmacy liaison.*

Diabetes & Weight Loss (GLP1)

- | | | |
|------------|------------|-------------|
| • Adylinx | • Ozempic | • Trulicity |
| • Bydureon | • Rybelsus | • Victoza |
| • Byetta | • Saxenda | • Wegovy |
| • Mounjaro | • Soliqua | • Xultophy |

Other Specialty Medications

- | | | |
|------------|------------|---------------|
| • Biktarvy | • Forteo | • Sandostatin |
| • Boniva | • Humira | • Skyrizi |
| • Cimzia | • Forteo | • Trexall |
| • Cosentyx | • Humira | • Truvada |
| • Descovy | • Nutropin | • Tymlos |
| • Dupixent | • Praluent | • Vemlidy |
| • Enbrel | • Prolia | • Xifaxan |
| • Femara | • Repatha | |

Non-MSOT Supported Diabetic Medications

These medication do not fall into Liaison/MSOT queue. Send a prescription to MS Pharmacy at CAM when prescribed along with a GLP1

- | | | |
|--------------|--------------|--------------|
| • Farxiga | • Janumet | • Qtern |
| • Glyxambi | • Kazano | • Segluromet |
| • Invokamet | • Kombiglyxe | • Steglatro |
| • Invokana | • Nesina | • Steglujan |
| • Jentadueto | • Onglyza | • Tradjenta |
| • Jardiance | • Oseni | • Trijardy |
| | | • Xigduo |

For Further Information:

See your Liaison or contact Mount Sinai Specialty Pharmacy **Manager of Patient Services**
Sageda El-Buluk | sageda.el-buluk@mountsinai.org