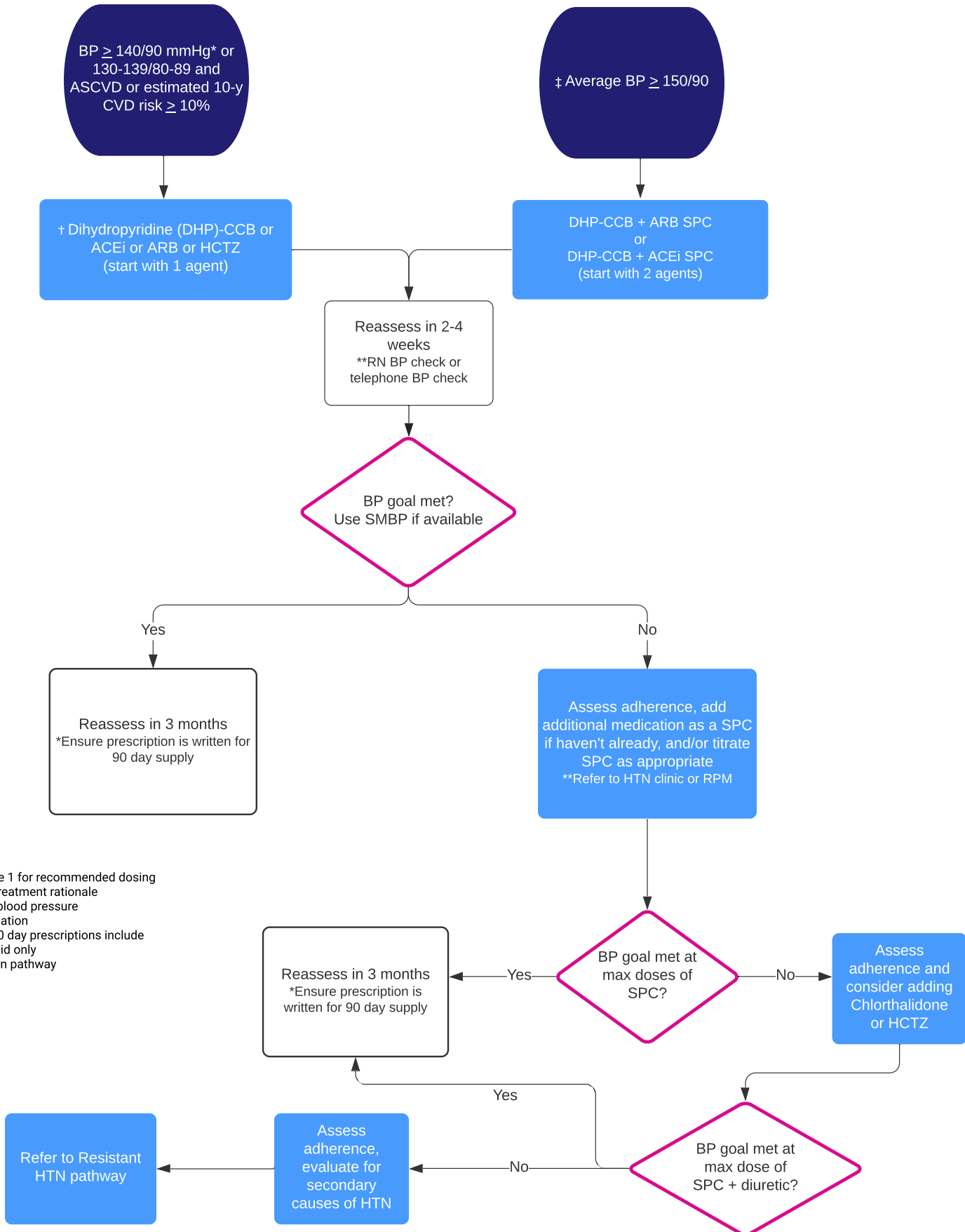


# IMA Hypertension Medication Treatment Algorithm

For adults without CHF, CAD, pregnancy, CKD with albuminuria  $\geq 300$  mg/d

This document is intended to be a guide for the management of hypertension and does not replace the individual patient's comorbidity assessment. Clinical judgement should still be used when applying this guidance.

**Step 1: Review patient chart to determine what agents have been attempted and failed in the past**  
**Step 2: Assess medical history for comorbidities that may impact choice of therapeutic agent**



† See Appendix 1, Table 1 for recommended dosing  
 ‡ See Appendix 2, for treatment rationale  
 SMBP: Self-measured blood pressure  
 SPC: Single-pill combination  
 \*some exceptions to 90 day prescriptions include blister packing, medicaid only  
 \*\*See IMA Hypertension pathway