

When prescribing a specialty medication, follow these steps to:

Engage Your Liaison

1 New Prescriptions

- Follow your normal workflow and order the specialty medication in EPIC
- Let your patient know to expect a phone call from their pharmacy liaison regarding his/her medication

2 Existing Prescription Questions

- You can bring specialty medication requests coming from incoming patient calls or outside pharmacies to liaison's attention by routing a message to the liaison pool in EPIC:

Pharmacy Care Team EPIC Pool:

MSD East 102nd Multispecialty Specialty Pharmacy Liaisons

Outlook Email Pool:

SpLiaisonsIMAMultispecialty@mountsinai.org

Follow the Prescription Life Cycle

Your Pharmacy Liaison will do the following:

1 Receive and Initiate

- Receive the specialty medication request via the supported EPIC pool
- Initiate a Benefits Investigation – making clear documentation via a Telephone Encounter

2 Update and Communicate

- Update the Telephone Encounter for every step of the process (prior authorization status/results, financial assistance status/results, and delivery dates)
- Communicate any potential delays or roadblocks directly to you and your care team

3 Monitor the MSOT basket

- Release refills to the pharmacy within 24 hours
- New starts will be released to the pharmacy after prior authorization and financial assistance (when applicable) are secured

4 Contact the Patient

- Liaisons proactively identify patients who can fill at Mount Sinai Specialty Pharmacy
- Patients will receive a phone call to discuss the new specialty pharmacy service and are given the choice to fill at our pharmacy

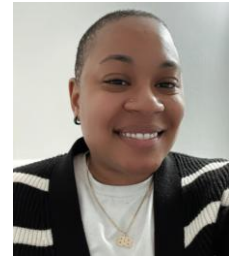
Your Personal Pharmacy Liaisons:



Michele Korn
Letters A-G



Olivia Gallo
Letters H-O



Tia Levere
Letters P-Z

Phone: 646-396-3290

Fax: 646-439-9836

Specialty Medications Supported by Your Liaisons

*There may be other medications not listed that are considered specialty medications. If you have any questions about a medication, please send an EPIC request to your pharmacy liaisons

Diabetes & Weight Loss (GLP1)

Adylin	Mounjaro	Saxenda	Victoza
Bydureon	Ozempic	Soliqua	Wegovy
Byetta	Rybelsus	Trulicity	Xultophy

Other Specialty Medications

Biktarvy	Dupixent	Nutropin	Skyrizi
Boniva	Enbrel	Praluent	Trexall
Cimzia	Femara	Prolia	Truvada
Cosentyx	Forteo	Repatha	Tymlos
Descovy	Humira	Sandostatin	Vemlidy
			Xifaxin

Non-MSOT Supported Diabetic Medications

These medications do not fall into the Liaison MSOT queue. Send a prescription to MS Pharmacy at CAM when prescribing along with a GLP1

Farxiga	Jardiance	Onglyza	Steglujan
Glyxambi	Janumet	Oseni	Tradjenta
Invokamet	Kazano	Qtern	Trijardy
Invokana	Kombiglyxe	Segluromet	Xigduo
Jentadueto	Nesina	Steglatro	

*based on the last 12 months of prescribing data

For Further Information:

See your Liaison or contact Mount Sinai Specialty Pharmacy **Manager of Patient Services**

Erin O'Connell | erin.oconnell@mountsinai.org | 646-847-7648